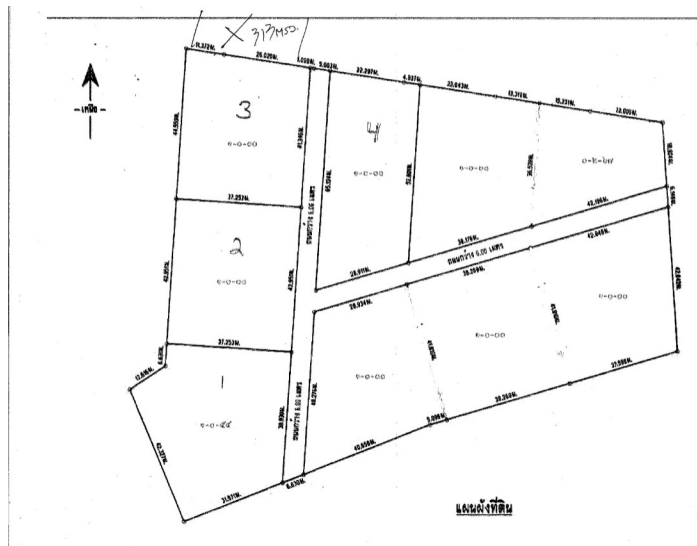


Serene Land for Sale in Paknampran



Listing ID: W-104

The Serene Land for Sale is located in Paknampran, Prantur. This expansive 1 Rai plot, covering approximately 1600 square meters, presents a fantastic investment opportunity for anyone seeking prime real estate. The area is witnessing robust growth, with numerous new homes under construction, signaling the development of a lively and thriving community. Its convenient access to essential services and nearby amenities further elevates the desirability of this location.

The property is designated as Lot #4 on the diagram, offering prospective buyers a secure investment opportunity. The seller is dedicated to facilitating a hassle-free transaction by covering all transfer fees involved in the sale. This proactive approach not only streamlines the purchasing process but also enhances the overall value of the investment.

The division of the land parcels is currently underway, with updated surveys and Chanote titles expected to be completed by January 2026. This guarantees prospective owners a reliable and transparent process of acquiring ownership. The property benefits from easy access via a government-maintained paved road, while essential utilities such as electricity, water, and internet are already established, enhancing the location's practicality and convenience. These readily available amenities make the site perfect for constructing a modern home or vacation retreat, offering the harmony of contemporary comfort alongside a natural setting. Additionally, the predominantly flat terrain simplifies both construction and landscaping efforts.

Call Jiab: 062-440-5969